

To The Honorable Kathy A. Surratt-States,  
*Re: Case No 12-51502*

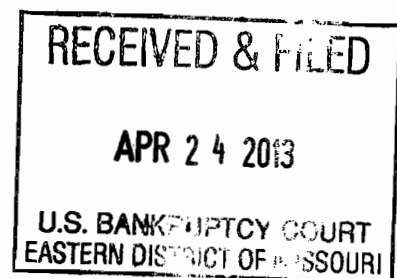
My name is Kevin Daugherty. I worked for Peabody Coal Co. at a surface mine, Squaw Creek, for twenty-seven years. I was a heavy equipment mechanic. It was a nasty, dirty job, but with the expectation of guaranteed health care it was a bearable job. Now Peabody has found a way to jeopardize even that.

In the 1990's we were on a contract strike for seven months. At that time I wrote a letter to Sam Shiftlet who was President of Peabody Coal and he called me to personally thank me for the constructive criticism.

There was never any mention of Patriot Coal, it didn't exist. But through the legal maneuvers of the management of Peabody Coal they invented this company and today Peabody is making record profits and Patriot Coal is failing. Peabody is making the working class people suffer again.

I hope this newspaper article sheds some light on what has been in the past and should be in the future.

Sincerely,  
Kevin Daugherty



# will help cut costs for Alcoa Warrick Operations

marshal.

The Chandler Town Board at its regular meeting last night voted to buy radio equipment to set up an emergency communications system between town-owned vehicles.

Aluminum Company of America and Peabody Coal Company today announced plans to activate "as soon as possible" the Squaw Creek Coal Company, a joint venture between Alcoa and Peabody located in Warrick County which will be operated by Peabody.

Squaw Creek Coal Company was created in 1956 by Alcoa and Peabody as part of long-range planning to supply fuel for Alcoa Generating Corporation, an Alcoa subsidiary operated by Southern Indiana Gas and Electric Company, which supplies the energy requirements of the Warrick operations. Since mid-1960, the power-producing complex has operated on coal purchased by Alcoa from Peabody, which has extensive fuel reserves in southern Indiana.

John R. Ibach, Alcoa's Warrick Works Operations Manager, said, "after periodic reassessments of our electrical power needs for Warrick, we believe now is the time to activate the Squaw Creek mine. As Warrick Works announced previously, we expect to have a second aluminum-producing potline operating by mid-year, which will add considerably to our electrical power consumption. Also, our power needs in the fabricating plant here are growing daily, and will continue to do so well into next year.

Squaw Creek's mine and preparation plant is located in Warrick County's Boon Township, approximately five and a half miles northwest of Boonville, the county seat. The coal preparation plant has a rated capacity of 750 tons of coal an hour. The mining area is estimated to contain more than a 50-year supply of coal. It is anticipated that the mine will begin producing about October 1, 1965.

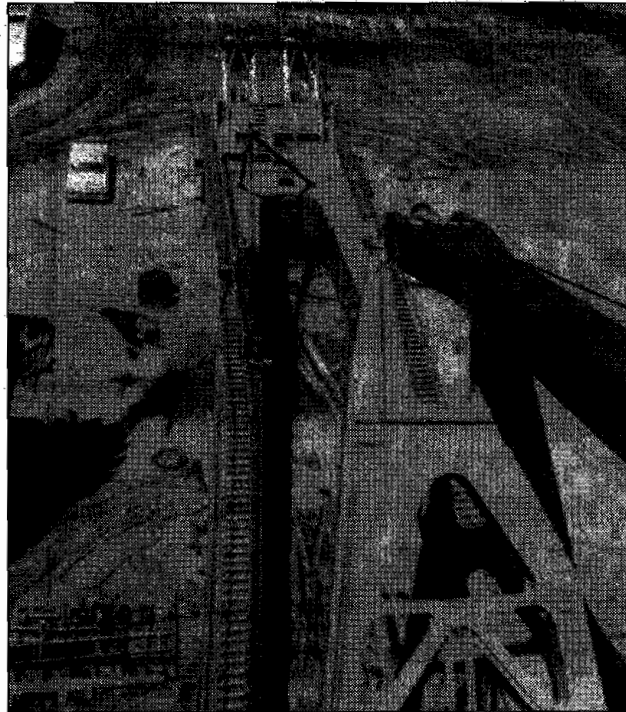
Included in the mining equipment is a 65-cubic

yard electric shovel, which will be utilized in stripping over-burden in the mining area. The shovel's housing stands 17 stories high, and its boom point is 144 feet from the ground. Transportation of coal to the Warrick Operations will be by rail.

T.L. Kelce, president of Peabody, said detailed plans for development of the mine have been completed and will be ready for operation on the announced date.

"This new mine," he said, "will not only serve the interests of Alcoa and Peabody, it also will be definitely beneficial to the community through payrolls of the mine and related interests."

He added that plans include a reclamation and conservation program for planting trees and other vegetation in the mined areas. "This project," he said, "means new business activity, employment, and final restoration of the mined areas to attractiveness and usefulness."



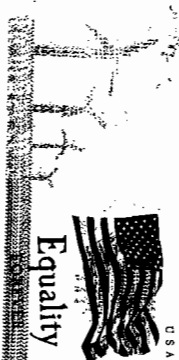
*Kathy A. Surratt  
708 S. Baker Rd  
Bloomville, TN  
47601*

*The Honorable Kathy A. Surratt-States*

*Re: Case No. 12-51502*

*Thomas F. Eagleton U.S. Courthouse  
111 South 10th Street, 4th Floor  
St. Louis, MO 63102*

22 APR 2013 PM 1 L



63102112533

2013 APR 24 AM 10:04

RECEIVED+FILED

CLERK, U.S. BANKRUPTCY COURT  
EASTERN DISTRICT  
ST. LOUIS, MISSOURI